



WEEK 2: Fingerspelling Practice, Pronouns, & Possessives

ASL Manual Alphabet:

For a video review of the ABCs, go to *Learn How To Sign*: <https://www.youtube.com/watch?v=sHyG7iz3ork>

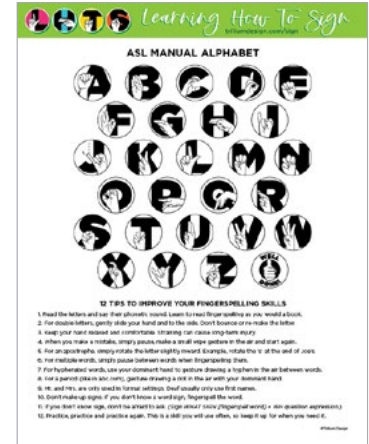
Fingerspelling Quiz:

We're going to take our own fingerspelling quiz, but for more practice, go to *Learn How To Sign*: <https://www.youtube.com/watch?v=25XUwHErhk>

Using Fingerspelling to speak in ASL

Point to someone in the room and ask them one of these questions. Once they answered using only fingerspelling, they can ask someone else.

- What is your favorite hobby? FAVORITE H-O-B-B-Y YOU (WH quest)
- What is your favorite food? FAVORITE FOOD YOU (WH quest)
- Where did you grow up? YOU GROW UP WHERE (WH quest)
- What's your favorite pet's name? FAVORITE PET NAME WHAT (WH quest)



ASL Pronouns & Possessives

Unlike English and other foreign languages, the personal pronouns are the same whether it is the subject or object of the sentence. For example, you would use your index finger to point to yourself to express both 'I' or 'me'.

HELPFUL TIP: For pronouns, you will be pointing to indicate who you are talking about. For possessives, you will be using a flat hand with fingers together as if you are pushing something towards them that belongs to the person.

PRONOUNS

- I/Me** - Index finger points to self, center chest.
- You (Sing.)** - Signer points to person spoken to.
- He/She/It** - Signer points to side person
- We/Us** - Touch index finger to dom shoulder, then bring it around in a circle to include all in front, then touch Non-dom shoulder
- You (plural)** - Index finger circles in front but does not include the signer. Or can point to several specific people (for example, you, you and you)
- They/Them** - signer circles group to the side, or points to individuals to the side.

POSSESSIVES

- My** - Flat hand, fingers together, palm on chest.
- Your** - Signer puts flat hand palm out to person.
- His/Hers/Its** - Flat palm towards a side person
- Our** - Flat palm follows path of 'we/us' from dom Shoulder to non-dom shoulder to indicate it all belongs to us.
- Your** - Flat palm pushes out around the circle to all or to several individuals (yours, yours and yours).
- Theirs** - signer uses flat palm to the side group to indicate pushing something towards them.

Additional Vocabulary - Sign Language & Music:

Today, we'll be going over the words and signs needed to do a song in ASL. The lyrics, ASL gloss and practice videos are out on BOX so you can practice them anytime you'd like. <https://app.box.com/s/sjk7winecpmjhd8w602i1hk5eleijkbn>

FOR NEXT WEEK: Try to watch the LEARN HOW TO SIGN video on Number. https://www.youtube.com/watch?v=Y4stD_ypaAI&list=PLMN7QCuj6dfaO7v-Oqkg3Bjq0XOT3c07X